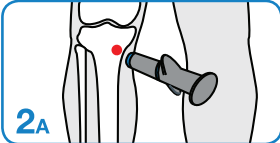
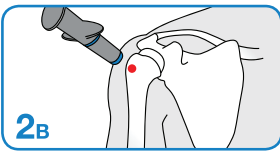


1. Open the pack and take out the NIO. Make sure that the NIO is free of all packaging parts.



2. Select one of the following injection sites:
2A. Primary site for Intraosseous injection: Proximal tibia

Approximately 1 inch or 2 cm medially and 1/2 inch or 1 cm proximally to the tibial tuberosity.

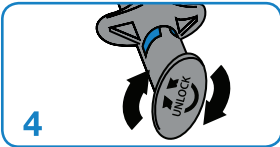


2B. Secondary site for Intraosseous injection: Humeral Head

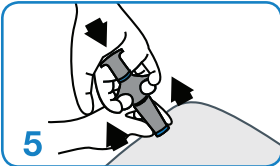
Adduct the patient's hand and locate the greater tubercle next to the head of the humerus. NOTE: To prevent accidental removal of the device, following the procedure immobilize the patient arm.



3. Disinfect the skin on the injection site by following institutional protocols. Note that this is a two-handed procedure. Place your nondominant hand on the textured dots located on the lower part of the NIO and position the NIO at a 90-degree angle to the skin at the injection site. The non-dominant hand should maintain this position throughout this procedure.



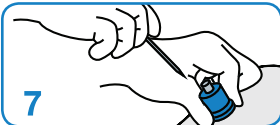
4. Unlock the NIO by rotating the cap 90 degrees in either direction.



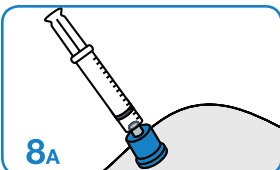
5. Place the palm of your dominant hand over the cap. Press the device against the patient's skin and maintain downward pressure. While pressing down on the device, pull the trigger wings upwards. This action will activate the device.



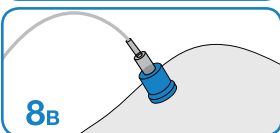
6. Gently pull the NIO up in a rotary motion while holding the base of the needle stabilizer against the insertion site.



7. Continue holding the needle stabilizer in place and pull up the stylet (twisting may be necessary). Place stylet into an appropriate biohazard container.



8. Connect a syringe and confirm secure fitting. If desired, aspirate bone marrow. Always confirm successful needle placement by flushing with up to 20 cc of fluid or per your protocol (A). Connect any standard system for infusion (B). Cover the insertion site with a sterile, occlusive dressing.



9. Removal instruction: Remove the cannula and needle stabilizer by twisting and pulling vertically. Dispose of the removed components in the appropriate biohazard container. Cover the insertion site with a sterile, occlusive, wound dressin.

